

HD78 GT



MODEL		HD78 GT		
Image (For illustration purpose only, actual unit may vary) - Cab & Chassis only. Rear body not included. - Foglamps not included - Marker lamps not included				
Drive	4x2 (6-Wheeler)			
Engine	D4CC (EURO 4)			
Type	Turbocharger Intercooler 4-stroke cycle, water-cooled, direct-injection diesel engine			
Displacement (cc)	(cc)	2,891		
Max. Power	(ps/rpm)	160 / 3,000		
Max. Torque	(kg-m/rpm)	40 / 1,250 - 2,800		
Fuel Tank Capacity	(L)	100 (Steel)		
Transmission				
Type	Floor Shift, 5-Speed Manual			
PTO	With			
Electrical System				
Battery	12V-105AH MF			
Alternator	12V-130A			
Starter	12V-2.2KW			
Chassis				
Suspension	Front/Rear	Taper / Multi		
	Shock Absorber	Hydraulic double acting telescopic type on the FRONT/REAR axle		
Brakes	Auxiliary Brake	Exhaust brake: Vacuum-operated, butterfly valve type		
	Brake Control System	Anti-lock Braking System (ABS) with Auto Adjuster (Fr/Rr)		
Tire & Wheel	Type	Single Front, Dual Rear		
	Tire (front / rear)	7.50R16-14PR		
Final Reduction Gear		5.857		
Weight	MWB	LWB	ELWB	
Chassis Cab Weight (kg)	2,585	2,965	3,438	
GVW (kg)	7,800	7,800	7,800	
Dimensions (cab & chassis)				
Wheelbase	(mm)	MWB	LWB	ELWB
		3,300	3,850	4,200
Overall	Length (mm)	6,030	6,960	7,385
(Chassis Cab)	Width (mm)	2,025 (DOOR HANDLE)	2,025 (DOOR HANDLE)	2,025 (DOOR HANDLE)
	Height (mm)	2,360 (7.50R16)	2,360 (7.50R16)	2,360 (7.50R16)
Overhang (Chassis Cab)	Front (mm)	1,120	1,120	1,120
	Rear (mm)	1,530	1,990	2,065
C. A (Cab to rear Axle)	(mm)	2,700	3,250	3,615
C. E (Cab to End of Frame)	(mm)	4,230	5,260	5,682
Accessories				
Air Conditioning	With	With	With	With
Power Window and Central Door Lock	With	With	With	With
Headlamp Leveling Device	With	With	With	With
Reverse Warning Buzzer	With	With	With	With

Note: Above specifications may change without prior notice.



2.9-liter Direct Injection Diesel Engine with Turbocharger Intercooler System

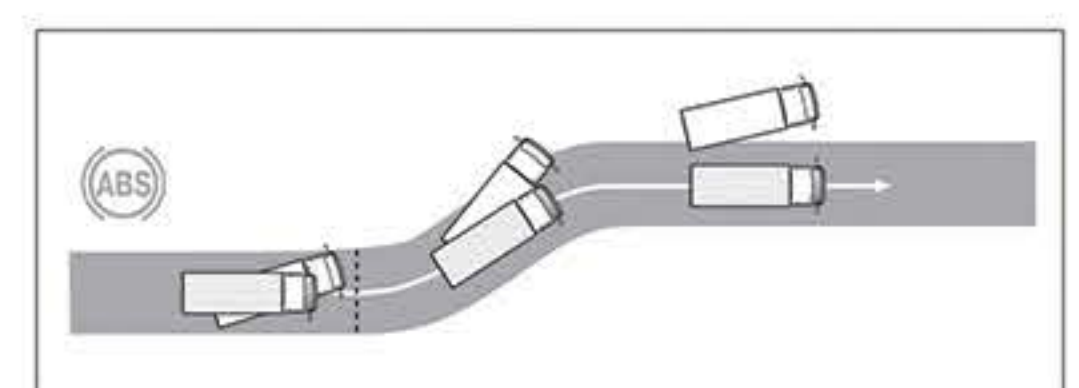


High-tensile Frame

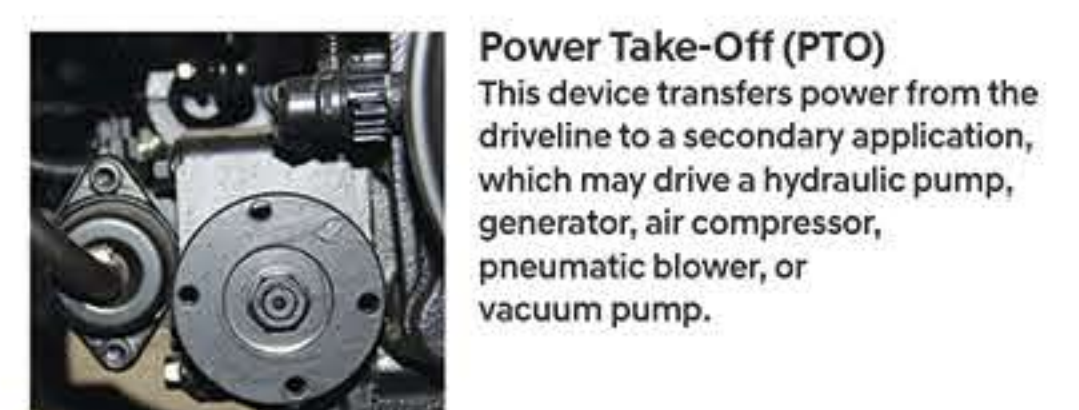


Adjustable Steering Wheel

High-tensile Steel Cab



Anti-lock Braking System with Auto Adjuster (Fr/Rr)



Power Take-Off (PTO)
This device transfers power from the driveline to a secondary application, which may drive a hydraulic pump, generator, air compressor, pneumatic blower, or vacuum pump.

- Photos may vary from actual unit and accessories.
- Consult your dealer on the features available.
- Options may be available at extra cost.

HYUNDAI TRUCKS AND BUSES AUTHORIZED DEALERS

METRO MANILA	LUZON	VISAYAS
ALABANG (02) 8553-8014 / (02) 8478-9430 / 0917-833-8397	BAGUIO (074) 248-2267 / BALIWAG (044) 766-4867 / 0999-223-0304	CEBU (032) 272-3333 / 0917-720-1605 / ILOILO (033) 320-5405 / (033) 320-7022 / 0917-628-2679 / 0917-772-6377
COMMONWEALTH (02) 8951-2201 Local 286 / 0917-806-7905	BATANGAS CITY (043) 781-1603 / 0921-545-0688 / 0917-877-8083	MINDANAO (088) 850-0055 / 0927-196-6170 / CAGAYAN DE ORO (082) 322-4158 / 0917-826-7189
MANILA BAY (02) 8556-1576 / (02) 8556-1580 / 0943-664-1138	CABANATUAN (044) 940-3348-49 local 217-219 / 0933-825-4897	DAVAO (083) 301-0000 / (083) 553-9488
	CLARK (045) 490-8532 / 0998-587-8685 / 0926-8711-738	GENERAL SANTOS (083) 301-0000 / (083) 553-9488
	DASMARINAS (02) 8519-4154 (046) 424-2153	



Basic Warranty for cab and chassis
Upper body warranty is separate from basic warranty, and may vary depending on warranty of body builder/manufacturer.

OFFICIAL DISTRIBUTOR OF HYUNDAI COMMERCIAL VEHICLES:
HARIPHIL ASIA RESOURCES, INC.

Issued on September 2022.