

# HD45 GT



MODEL		HD45 GT	
Image (For illustration purpose only, actual unit may vary) - Cab & Chassis only. Rear body not included. - Foglamps not included - Marker lamps not included			
Drive	4x2 (4-Wheeler)		
Engine	D4CC (EURO 4)		
Type	Turbo Charger Intercooler 4-stroke cycle, water-cooled, direct-injection diesel engine		
Displacement (cc)	(cc)	2,891	
Max. Power	(ps/rpm)	160 / 3,000	
Max. Torque	(kg-m/rpm)	40 / 1,250 - 2,800	
Fuel Tank Capacity	(L)	100 (Steel)	
<b>Transmission</b>			
Type	Floor Shift, 5-Speed Manual		
PTO	With		
<b>Electrical System</b>			
Battery	12V-105AH MF		
Alternator	12V-130A		
Starter	12V-2.2kW		
<b>Chassis</b>			
Suspension	Front/Rear	Multi / Multi	
	Shock Absorber	Hydraulic double acting telescopic type on the FRONT/REAR axle	
Brakes	Auxiliary Brake	Exhaust brake: Vacuum-operated, butterfly valve type	
	Brake Control System	Anti-lock Braking System (ABS) with Auto Adjuster (Fr/Rr)	
Tire & Wheel	Type	Single Front, Single Rear	
	Tire (front / rear)	7.50R16-14PR	
Final Reduction Gear	5.375		
<b>Weight</b>			
		MWB	LWB
Chassis Cab Weight (kg)		2,360	2,400
GVW (kg)		4,490	4,490
<b>Dimensions (cab &amp; chassis)</b>			
		MWB	LWB
Wheelbase	(mm)	3,300	3,850
Overall	Length (mm)	5,910	6,460
(Chassis Cab)	Width (mm)	2,025 (DOORHANDLE)	2,025 (DOORHANDLE)
	Height (mm)	2,330	2,330
Overhang	Front (mm)	1,120	1,120
(Chassis Cab)	Rear (mm)	1,490	1,490
C. A (Cab to rear Axle)	(mm)	2,400	2,950
C. E (Cab to End of Frame)	(mm)	4,220	4,770
<b>Accessories</b>			
Air Conditioning		With	With
Power Window and Central Door Lock		With	With
Headlamp Leveling Device		With	With
Reverse Warning Buzzer		With	With

Note: Above specifications may change without prior notice.

- Photos may vary from actual unit and accessories.
- Consult your dealer on the features available.
- Option may be available at extra cost.

### HYUNDAI TRUCKS AND BUSES AUTHORIZED DEALERS

<b>METRO MANILA</b>	<b>LUZON</b>	<b>VISAYAS</b>
ALABANG (02) 8553-8014 / (02) 8478-9430 / 0917-833-8397	BAGUIO (074) 248-2267	CEBU (032) 272-3333 / 0917-720-1605
COMMONWEALTH (02) 8951-2201 Local 286 / 0917-806-7905	BALIWAG (044) 766-4867 / 0999-223-0304	ILOILO (033) 320-5405 / (033) 320-7022 / 0917-628-2679 / 0917-772-6377
MANILA BAY (02) 8556-1576 / (02) 8556-1580 / 0943-664-1138	BATANGAS CITY (043) 781-1603 / 0921-545-0688 / 0917-877-8083	MINDANAO (088) 850-0055 / 0927-196-6170
	CALAMBA (045) 499-9532 / 0998-587-8685 / 0926-8711-738	CAGAYAN DE ORO (082) 322-4158 / 0917-826-7189
	CLARK (045) 499-9532 / 0998-587-8685 / 0926-8711-738	DAVAO (082) 322-4158 / 0917-826-7189
	DASMARINAS (02) 8519-4154 (046) 424-2153	GENERAL SANTOS (083) 301-0000 / (083) 553-9488



2.9-liter Direct Injection Diesel Engine with Turbocharger Intercooler



5-speed Manual Transmission System



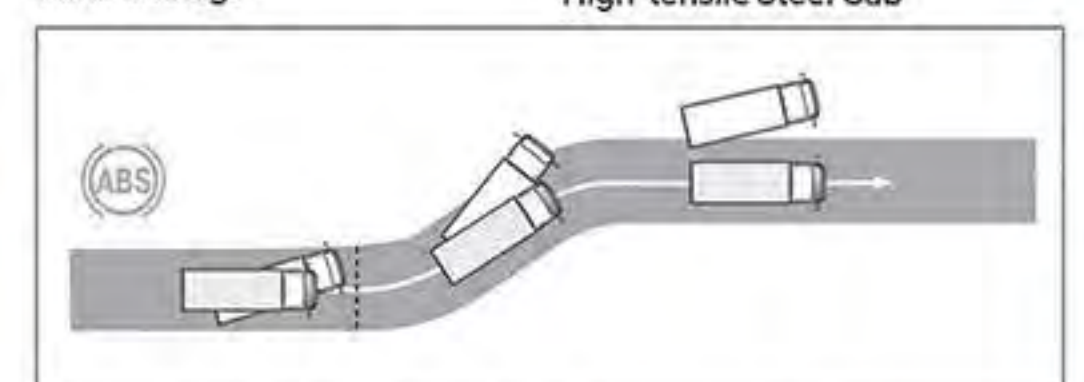
High-tensile Frame



Big, clear side mirrors to give you ample visibility of driving surroundings



High-tensile Steel Cab



Anti-lock Braking System with Auto Adjuster (Fr/Rr)



**Power Take-Off (PTO)**  
This device transfers power from the driveline to a secondary application, which may drive a hydraulic pump, generator, air compressor, pneumatic blower, or vacuum pump.



**Wider Cab Tilting Angle**  
- 46° tilt angle



OFFICIAL DISTRIBUTOR OF HYUNDAI COMMERCIAL VEHICLES:  
**HARIPHIL ASIA RESOURCES, INC.**

Basic Warranty for cab and chassis  
Upper body warranty is separate from basic warranty, and may vary depending on warranty of body builder/manufacturer.

Issued on September 2022.